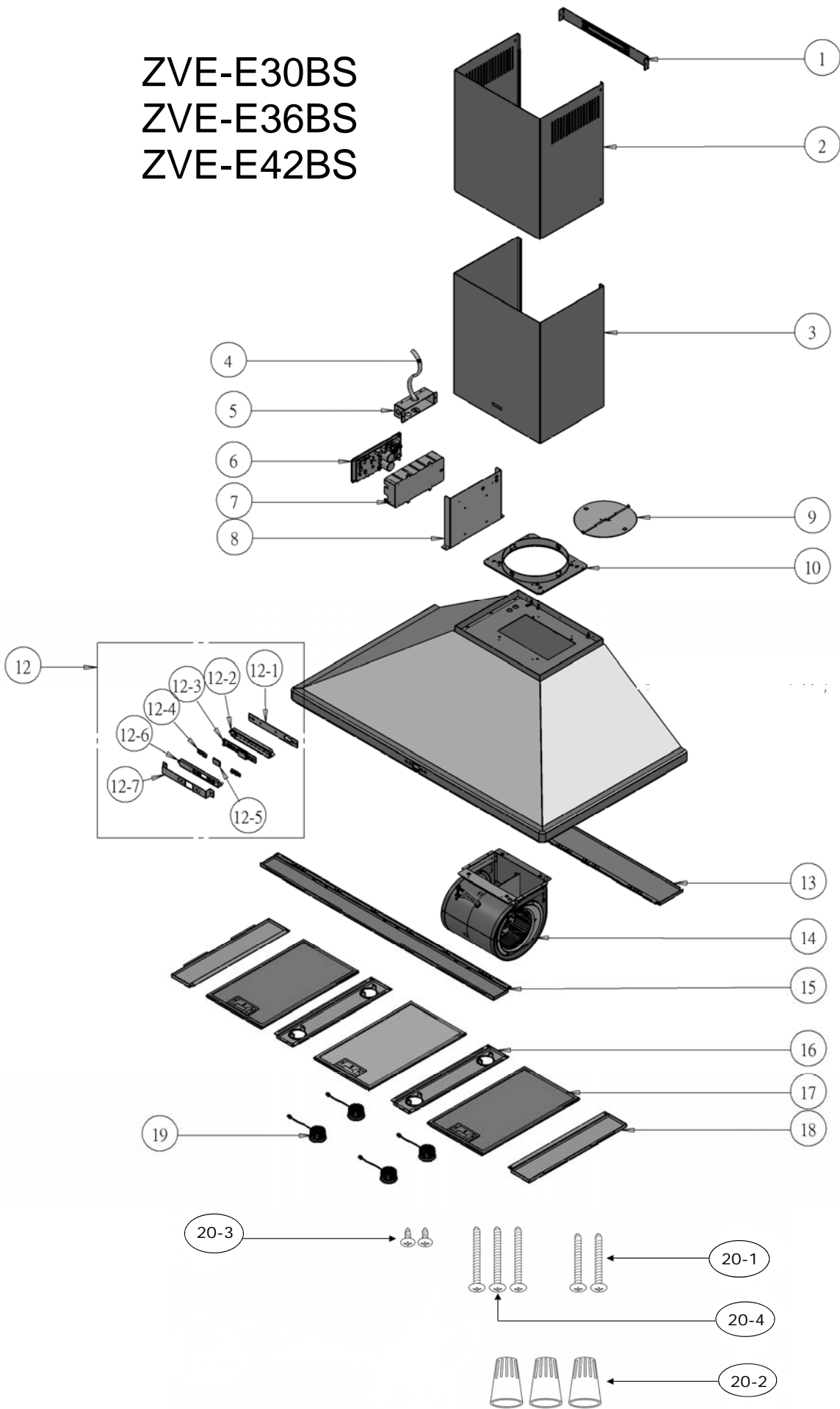


ZVE-E30BS
ZVE-E36BS
ZVE-E42BS



ZEPHYR

Venezia

ZVE-E30BS, ZVE-E36BS, ZVE-E42BS

Ref #	Part #	Description	Qty.
1	54110044	Bracket, Duct Cover	1
2	50050131	Duct Cover, Upper	1
3	50050132	Duct Cover, Lower	1
4	11030070	Wires, Electrical	1
5	50500085	Assembly, Electrical Box	1
6	11010043	Control Board	1
7	56200051	Box, Component	1
8	54140120	Bracket, Electrical	1
9	54060010	Damper, 8" Round	1
10	54050073	Collar, Motor, 8" Round	1
12	11000064	Switch Assembly	1
12-1	54140096	Plate, Switch	1
12-2	52170042	Housing, Switch	1
12-3	11010044	Switch Board	1
12-4	50400011	Buttons	2
12-5	52170043	Cover, LCD Screen	1
12-6	56210055	Cover, Switch	1
12-7	54140113	Bracket, Switch	1
13	50120047	Panel, Rear (ZVE-E30BS)	1
13	50120048	Panel, Rear (ZVE-E36BS)	1
13	50120049	Panel, Rear (ZVE-E42BS)	1
14	12120064	Motor	1
15	50140089	Panel, Front (ZVE-E30BS)	1
15	50140090	Panel, Front (ZVE-E36BS)	1
15	50140091	Panel, Front (ZVE-E42BS)	1
16	50110102	Panel, Light, Center (ZVE-E30BS)	1
16	50110101	Panel, Light (ZVE-E36BS/E42BS)	2
17	50200027	Filter, Aluminum Mesh (30" x 2)	3
18	50110099	Panel, Light, Sides (ZVE-E30BS)	2
18	50110100	Panel, Sides (ZVE-E42BS)	2
19	Z0B-0032	Bulb, Bloom LED, 3W (30" x 3)	4

20	05000081	Hardware Packet	1
20-1	01090001	Screw, M6 x 1"	2
20-2	15000002	Wire Nut	3
20-3	01070006	Screw, M4 x 8mm	2
20-4	01070015	Screw, M6 x 1 1/4"	3

FEB13.0201