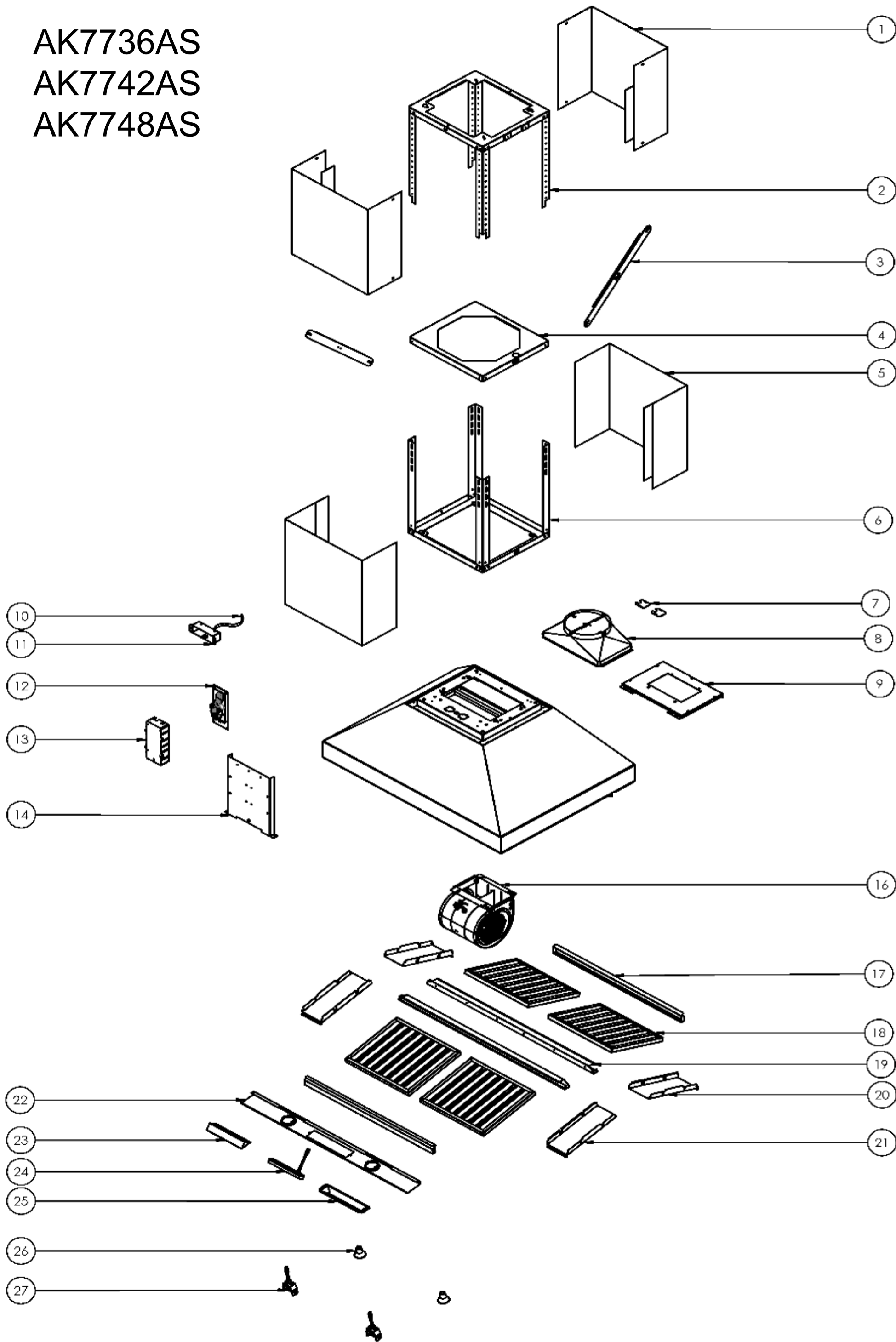


AK7736AS
AK7742AS
AK7748AS



AK7736AS, AK7742AS, AK7748AS

Ref #	Part #	Description	Qty.
1	50050204	Upper Duct Cover (36" & 42")	2
1	50050206	Upper Duct Cover (48")	2
2	54110117	Upper Support Frame (36" & 42")	1
2	54110120	Upper Support Frame (48")	1
3	54110119	Lateral Support Bracket	2
4	54140278	Center Square Support Bracket (36" & 42")	1
4	54140279	Center Square Support Bracket (48")	1
5	50050205	Lower Duct Cover (36" & 42")	2
5	50050207	Lower Duct Cover (48")	2
6	54110118	Lower Support Frame (36" & 42")	1
6	54110121	Lower Support Frame (48")	1
7	56210091	Electrical Cover	2
8	54050084	8" Round Transition Collar	1
9	54140236	Single Motor Bracket	1
10	11030123	Electrical Power Cable	1
11	56200085	Component Box	1
12	11010097	Main Power Control Board	1
13	56200051	Electrical Box	1
14	54140237	Component Bracket	1
16	12120086	PowerWave Blower	1
17	56130039	Residue Tray (36" & 42")	2
17	56130040	Residue Tray (48")	2
18	50210036	Pro Baffle Filter (48" x 6)	4
19	54140280	Center Filter Panel (36")	2
19	54140281	Center Filter Panel (42")	2
19	54140282	Center Filter Panel (48")	2
20	50120167	Side Panel Rear (36")	2
20	50120168	Side Panel Rear (42")	2
21	50120169	Side Panel Front (36")	2
21	50120170	Side Panel Front (42")	2
22	50110264	Light Panel (36")	1
22	50110265	Light Panel (42")	1
22	50110266	Light Panel (48")	1
23	54140238	Switch Bracket	1

24	11000135	Switch Assembly	1
25	52110026	Switch Control Cover	1
26	Z0B0040	Bloom GU10 LED, 6W (48" x 4)	2
27	12100048	Light Socket (48" x 4)	2
28	05000142	Hardware Packet	1
29	81010010	Ceiling Template (36" & 42")	1
29	81010011	Ceiling Template (48")	1

OCT19.0101