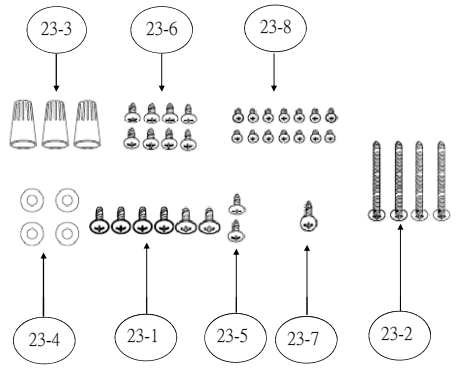
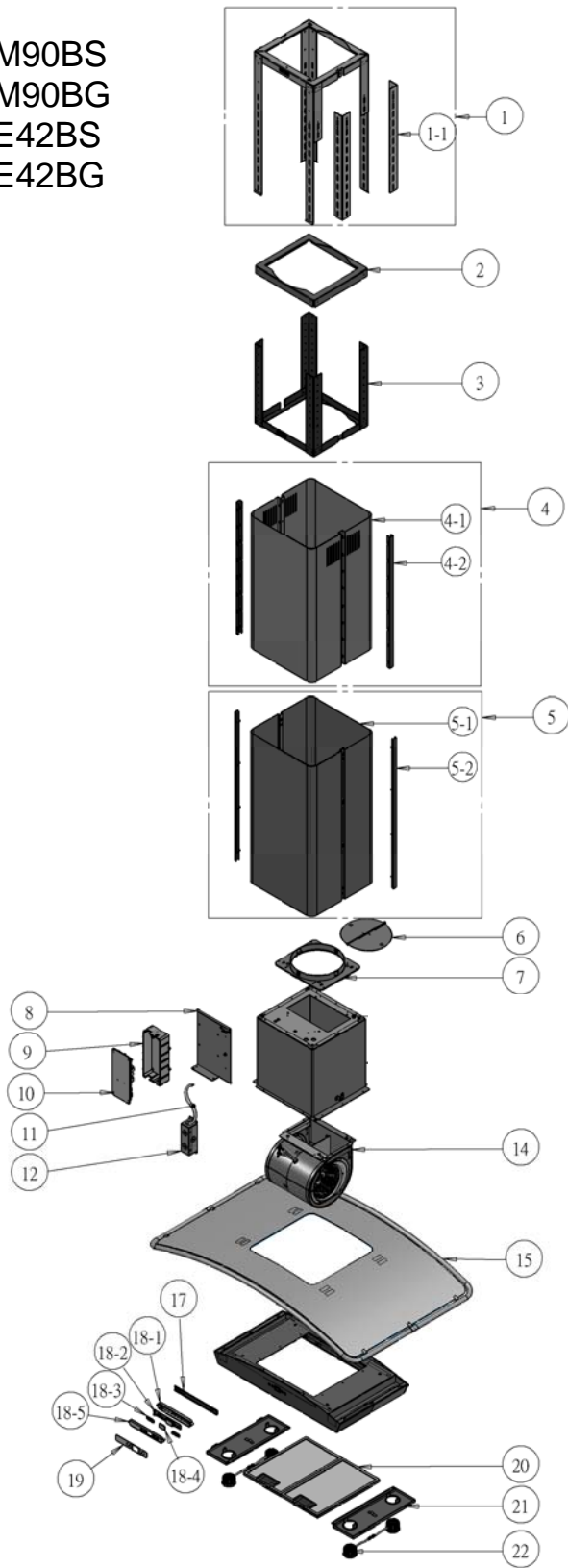


ZML-M90BS  
 ZML-M90BG  
 ZML-E42BS  
 ZML-E42BG



# ZEPHYR

# Milano Is.

## ZML-M90BS/G, ZML-E42BS/G

Ref #	Part #	Description	Qty.
1	54110080	Support Frame, Upper	1
1-1	54120011	Lateral Support Bracket	2
2	54110081	Bracket, Support Frame	1
3	54110082	Support Frame, Lower	1
4	50050126	Duct Cover Assembly, Upper	1
4-1	50050127	Duct Cover, Upper	2
4-2	50170054	Trim, Upper Duct Cover	2
5	50050128	Duct Cover Assembly, Lower	1
5-1	50050129	Duct Cover, Lower	1
5-1	50050130	Duct Cover, Lower w/Logo	1
5-2	50170055	Trim, Lower Duct Cover	2
6	54060010	Damper, 8" Round	1
7	54050073	Collar, 8" Round	1
8	54140104	Bracket, Electrical	1
9	56200051	Box, Control Board	1
10	11010043	Control Board	1
11	11030070	Wires, Electrical	1
12	50500101	Assembly, Junction Box	1
14	12120064	Motor	1
15	50300100	Canopy (ZML-M90BS)	1
15	50300101	Canopy (ZML-E42BS)	1
15	50300102	Canopy (ZML-M90BG)	1
15	50300103	Canopy (ZML-E42BG)	1
17	54140119	Bracket, Switch, Rear	1
18	11000072	Switch Assembly	1
18-1	52170042	Housing, Switch	1
18-2	11010044	Switch Board	1
18-3	50400011	Switch Buttons	2
18-4	52170043	Cover, LCD Screen	1
18-5	56210055	Cover, Switch	1
19	54140117	Bracket, Switch, Front	1

20	50200043	Filter, Aluminum Mesh	2
21	50110098	Panel, Light	2
22	Z0B-0032	Bulb, Bloom LED, 3W	4
23	05000080	Hardware Packet	1
23-1	01020011	Screw, 3/16 x 1/4	6
23-2	01090002	Screw, M6 x 1 1/2"	4
23-3	15000002	Wire Nut	3
23-4	02170001	Washer	4
23-5	01070006	Screw, Sheet Metal, M4 x 8mm	2
23-6	01070022	Screw, Machine, M4 x 8mm	8
23-7	01070021	Screw, M4 x 12mm	1
23-8	01060011	Screw, M3 x 5mm	14
24	81010003	Template, Ceiling	1

JUN12.0201