

THE BUILDING BLOCKS  
OF A GREAT KITCHEN

**ZEPHYR**



ESSENTIALS COLLECTION

## **THIS IS ZEPHYR**

---

A company driven by the idea that everything in the home is an opportunity for personal expression. That's why we've raised the kitchen hood to its rightful place as a distinctive design element that also delivers powerful performance.

## **MORE THAN JUST THE BASICS, THESE ARE THE BUILDING BLOCKS OF A GREAT KITCHEN**

---

The Essentials Collection, powered with our DCBL Suppression System® is the perfect place to start when planning your kitchen project. Enhance your love of cooking and increase your enjoyment of it by choosing a range hood ideal for your style and budget.

## FIVE REASONS WE STAND OUT

---

### **Quiet Performance**

Our range hoods aren't just powerful. They're powerfully quiet, serving up great ventilation free of noise so you can enjoy entertaining family and friends nearby.

### **Superior Craftsmanship**

With an unrelenting eye for detail, we deliver exceptional quality fit and finish you can see, feel and appreciate.

### **Performance Versatility**

Our products offer a wide range of power and innovation starting with our universal make-up air dampers, exclusive Airflow Control Technology™ (ACT™) and CFM levels ranging from 250 up to 1,200.

### **Zephyr Warranty**

We back our products with an unparalleled level of service and a generous multi-year warranty.

### **Energy Efficient**

New ENERGY STAR models are certified for superior efficiency using 20-30% less energy than traditional models.



## TECHNOLOGY AND INNOVATION

---

Zephyr continues to lead the way with industry-first technology such as the DCBL Suppression System<sup>®</sup>, Airflow Control Technology<sup>™</sup> and Bloom<sup>™</sup> HD LED light bulbs. Our product team has recently developed cutting edge innovation that includes ICON Touch<sup>®</sup> Controls, Quick-Lock Installation and Self-Cleaning Systems; resulting in the most advanced range hood technology available today.

### PRODUCT TECHNOLOGIES

---

#### DCBL Suppression System<sup>®</sup>

The DCBL Suppression System<sup>®</sup> is the first range hood motor to use direct current (DC) energy. The result is a system with decreased ambient noise and increased power and efficiency. DCBL<sup>™</sup> hoods include Bloom<sup>™</sup> HD LED lights and an on-board chip that monitors and optimizes your hood's performance.

#### Benefits Include

Up to 77% More Energy efficient\*

Up to 77% Less noise, whisper quiet\*

Up to 30% More CFM power\*

Bloom<sup>™</sup> HD LED bulbs

Longer Warranty



\*compared to an AC motor

To learn more about our DCBL Suppression System<sup>®</sup> visit [zephyronline.com/DCBL](http://zephyronline.com/DCBL).



#### LCD Controls

Innovative backlit LCD screen displays useful information such as fan speed and lighting status, and is easily viewed in dark or dimly lit kitchens. Stylish electronic jewel buttons provide unparalleled mastery of your kitchen environment.

An optional ADA compliant wireless remote control is now available on all DCBL<sup>™</sup> models.



### **Bloom™ HD LED Lighting**

With a lifetime of 25,000 hours, Bloom™ HD LED bulbs are an industry breakthrough and are unmatched in performance, light emission and value. Our Bloom™ HD LED bulbs are dimmable and give off a clean, natural looking light, while remaining cool to the touch.

ACT™

### **Airflow Control Technology™**

All DCBL™ and select models include ACT™ or Airflow Control Technology™, which is a proprietary feature that limits blower CFM to ensure your home is safe and in compliance with local make-up air codes.

**ESSENTIALS COLLECTION**



## Europa

Classics never go out of style. Since 2001, our Europa models have set the industry standard by combining sleek European design elements with high-powered American performance.

- Superior quality fit and finish
- Innovative technology
- Quiet operation
- Accommodates the widest range of ceiling heights in the industry
- Easy installation
- DCBL™ models now available with an optional wireless remote control accessory
- ENERGY STAR model available
- Optional recirculating kit for most models
- Optional extension duct cover for all chimney models
- Quick-Lock installation for island models



### MILANO ISLAND (ZML)

A bold technological breakthrough, this island hood includes our DCBL Suppression System® making it the quietest, most powerful, energy efficient range hood available today. Available with Clear Glass and Stainless Steel canopy options, and with ACT™ technology. Size: 36", 42" CFM: 715, 590, 390, 290



### NAPOLI ISLAND (ZNA)

Strong and sophisticated with upwardly-angled walls, Napoli makes an impression. Includes DCBL Suppression System® and ACT™ technology. Now with Quick-Lock installation system, magnetic duct covers, and baffle filters. Size: 36", 42" CFM: 715, 590, 390, 290



### MODENA ISLAND (ZMD)

Modena Island's low-profile, stainless steel and airy glass canopy resembles a floating island over your cooktop or range. A perfect blend of architecture and performance. Includes our DCBL™ and ACT™ technology, the most advanced systems available today. Size: 36", 42" CFM: 715, 590, 390, 290



### VERONA ISLAND (ZVN)

The straight glass canopy also serves up accent LED lighting in Cloud White, Deep Blue, and Amber color options. Includes Zephyr's Quick-Lock installation system. Available with ACT™ technology. Size: 36", 42" CFM: 715, 590, 390, 290





#### ANZIO ISLAND (ZAZ)

Anzio's 600-CFM blower, ICON Touch® controls, dual-level halogens and Quick-Lock installation system put it a step ahead of the competition. Available with ACT™ technology.

Size: 36", 42" CFM: 600, 390, 290



#### LUCÉ ISLAND (ZLC)

Boasting an elegant slice of sleek stainless steel married with the subtle glamor of accent lighting in Cloud White, Deep Blue, and Amber, Lucé is the (gorgeous) future of range hoods. Available with ACT™ technology and our Quick-Lock installation system with magnetic duct covers.

Size: 36", 42" CFM: 600, 390, 290



#### ROMA ISLAND (ZRM)

A bold, angular presence at an affordable cost, Roma is ideal for the design-savvy chef or builder who refuses to settle for mediocrity. Available with ACT™ technology.

Size: 36", 42" CFM: 600, 390, 290



#### VENEZIA WALL (ZVE)

A polished and classic design houses Zephyr's DCBL Suppression System®, elevating this ageless range hood to new levels. Available with ACT™ technology, baffle filters and directional Bloom™ HD LED light bulbs.

Size: 30", 36", 42" CFM: 715, 590, 390, 290



#### VERONA WALL (ZVO)

The Verona's straight-glass canopy is equipped with integrated LED accent lighting that rotates between Cloud White, Deep Blue, and Amber color options. Available with ACT™ technology.

Size: 30", 36" CFM: 715, 590, 390, 290



#### ANZIO WALL (ZAN)

A low-profile, chimney-style range hood that will add style and value to any kitchen. Complete with a 600-CFM blower, ICON Touch® controls and our exclusive ACT™ technology.

Size: 30", 36" CFM: 600, 390, 290





#### SIENNA PRO ISLAND (ZSL)

With its classic, professional-style design Sienna Pro Island is equipped with a 1,200-CFM blower, hybrid baffle filters and Zephyr's ICON Touch® controls. Size: 42", 48" CFM: 1,200



#### MILANO WALL (ZMI)

Curved canopy design, LCD controls, dimmable Bloom™ HD LED bulbs and DCBL™ technology deliver high style without compromise. Available with a Stainless Steel or Clear Glass canopy. Available with ACT™ technology. Size: 36" CFM: 715, 590, 390, 290



#### MODENA WALL (ZMO)

Resembling a floating canopy made of steel and glass, Modena houses the most advanced Bloom™ HD LED light bulbs, and electronic LCD controls within its one-inch stainless steel canopy. Available with ACT™ technology. Size: 30", 36" CFM: 715, 590, 390, 290



#### LUCÉ WALL (ZLU)

Boasting an elegant slice of sleek stainless steel married with the subtle glamor of accent lighting in Cloud White, Deep Blue, and Amber, the Lucé is the (gorgeous) future of range hoods. Available with ACT™ technology. Size: 30", 36" CFM: 600, 390, 290



#### RAVENNA WALL (ZRV)

21st Century marries timeless beauty in this stunning hood, which features Clear and Smoke-Gray Glass canopy options, ACT™ technology and ICON Touch® controls. Size: 30", 36" CFM: 600, 390, 290



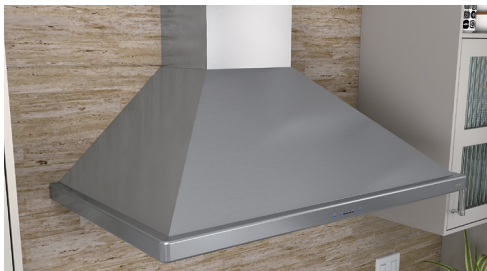
#### ROMA WALL (ZRO)

This contemporary design is complemented with a 600-CFM blower that operates at an ultra-quiet single sone. The ICON Touch® controls and 5-speed levels offer added performance. Available with ACT™ technology. Size: 30", 36" CFM: 600, 390, 290



#### SAVONA WALL (ZSA)

A semi-circular surface accentuates this range hood's European design. Featuring a robust 685-CFM blower, 5-speed ICON Touch® controls, and our exclusive ACT™ technology. Available in black, white and stainless steel. Size: 30", 36" CFM: 685, 390, 290



#### SIENA WALL (ZSI)

Packed with power, a 650-CFM blower, ACT™ technology and hybrid baffle filters make this hood perfect for any kitchen. Dual-level halogen lights and ICON Touch® controls make clearing the air as simple as the touch of a button. Size: 30", 36" CFM: 650, 390, 290



#### SIENA ES WALL (ZSI-ES)

The Siena ES, certified ENERGY STAR hood is packed with power. With a 400-CFM blower and ACT™ technology it has a versatile range of features that'll shine in any kitchen. Warm-white fluorescent lights and Zephyr's new ICON Touch® controls make clearing the air as simple as touching a button. Size: 30", 36" CFM: 400, 290



#### GENOVA UNDER-CABINET (ZGE)

With a retractable Smoke-Gray Glass visor that controls the hood's blower and lights, the Genova's crescent-like body delivers stunning design and quality performance. Available with an optional wireless remote. Size: 30", 36" CFM: 500, 290



#### PISA UNDER-CABINET (ZPI)

Tucked neatly beneath your bridge cabinet, Pisa works quietly and beautifully out of sight. Its retractable glass visor controls the hood's 290-CFM blower and halogen lights. Size: 30", 36" CFM: 290



#### PYRAMID UNDER-CABINET (ZPY)

Classic, architectural lines meet at an apex to energize the classic look of the chimney-style under-cabinet hood. Pyramid also boasts an adjustable utensil bar to keep utensils within easy reach. Available in Stainless Steel. Size: 30", 36" CFM: 400, 290



**SIENNA PRO WALL (ZSP)**

With its classic, professional-style design Sienna Pro is equipped with a 1,200-CFM blower, hybrid baffle filters and Zephyr's ICON Touch® controls. Clean, efficient power is just a touch away.  
Size: 42", 48" CFM: 1,200



**SORRENTO DOWNDRAFT (DD1)**

Ideal for small kitchens or island settings where ceilings are too high for ducting, Sorrento rises to the occasion as a downdraft hood option.  
Size: 30", 36" CFM: 500



**TAMBURO UNDER-CABINET (ZTA)**

A fresh approach that's designed for real life, this original comes equipped with halogen lighting, 3-speeds and an adjustable utensil bar.  
Size: 30", 36" CFM: 400, 290



**TERAZZO UNDER-CABINET (ZTE)**

Boasting the ideal combination of style, convenience and innovation. With its 12-inch cabinet mounting depth and ingenious terraced display rack, it's the perfect addition to any kitchen.  
Size: 30", 36" CFM: 400, 290

## Power Series and Breeze

Robust power and superior value make the Power & Breeze series of range hoods best-in-class.

- Advanced CFM power
- Self-Cleaning systems
- Ultra-quiet performance
- Industry leading warranty
- Multiple color options
- Value driven
- ACT™ in select models



### CYCLONE UNDER-CABINET (AK65)

Modern, clean lines provide a perfect complement to any interior, while centrifugal blowers liquefy cooking residue without complex filters to make clean up a snap. Available in black, white and stainless steel finishes. Size: 30", 36", 42" CFM: 600



### HURRICANE UNDER-CABINET (AK25)

High tech meets high style with an updated look and feel. 3-speed electronic touch controls take charge of the 695-CFM blowers and dual-level halogen lights. And a self-cleaning feature adds additional convenience. Available in black, white, and stainless steel and now with ACT™ technology. Size: 30", 36" CFM: 695, 390, 290



### BREEZE I UNDER-CABINET (AK11)

Its sophisticated features and performance set the industry standard for value. 3-speed mechanical controls and 250-CFM blower quietly clears the air while efficient dishwasher-safe aluminum filters remove airborne residues. Available in black, white and stainless steel finishes. Size: 24", 30", 36" CFM: 250



### BREEZE II UNDER-CABINET (AK12)

For superior value in a quiet, high-performance package, Breeze II comes equipped with 3-speed electronic control, 400-CFM blower, and convenient dishwasher-safe aluminum filters to remove airborne residues. Available in black, white and stainless steel finishes. Size: 30", 36" CFM: 400



#### TYPHOON UNDER-CABINET (AK21)

One of our founding models, now with an updated look, we crafted a smooth curvature then upped the volume with powerful, virtually noise-free 850-CFM blowers and a convenient self-cleaning system. Available in black, white and stainless steel and now with ACT™ technology.

Size: 30", 36", 42", 48" CFM: 850, 390, 290

## Pro-Style

---

If you're in the market for super-powered ventilation, look no further than Zephyr's Pro-Style options.

- Professional-grade capture and performance
- High-quality stainless steel body
- Professional baffle filters
- Multiple blower CFM options
- Optional wireless remote control on select models



#### GUST UNDER-CABINET (AK71)

A discreet, European-style, professional-looking range hood, Gust adds fashion and function to under-cabinet installations. An adjustable utensil bar keeps utensils within easy reach. Also available with baffle filters.

Size: 30", 36" CFM: 400, 290



#### TEMPEST I UNDER-CABINET (AK70)

A streamlined under-cabinet pro-style range hood, Tempest I combines power efficiency and flexibility. 650-CFM or 1,200-CFM blower options and pro baffle filters ensure a lifetime of exceptional performance. Available with ACT™ technology.

Size: 30", 36", 42" CFM: 1,200, 650, 390, 290



#### TEMPEST II WALL (AK75)

Designed with professional-grade performance and seamless contours, the wall-mount Tempest II gives you serious cooking power with 650-CFM or 1,200-CFM blower options. Available with ACT™ technology. Size: 30", 36", 42", 48" CFM: 1,200, 650, 390, 290

## Power Pack & One-Piece Liners (OPL)

Behold the first-ever inserts that combine forward-thinking technology and knock-out performance to match even the most ambitious cooking needs.

- Powerful performance
- Matches most commonly specified installation dimensions
- The quietest custom hood inserts on the market
- Professional baffle filters on most models
- Wireless remote control included with most models
- ENERGY STAR models available



#### TORNADO III POWER PACK (AK83)

Tornado III takes the typical power pack up a notch, with multiple blower options to meet the most demanding chef's requirements. 3-speed electronic controls and wireless remote control put you in command. An adjustable depth liner is also available. Size: 38" CFM: 1,000, 600, 290



#### CYPRESS WALL OUTDOOR (AK78)

The updated Cypress features a 304-grade stainless steel polished body, two speed metallic knob controls, dual-level halogen lighting and an extended 32" depth for even more capture. Optional 12" duct cover accessory. Size: 36", 42", 48", 54" CFM: 1,200



#### TWISTER POWER PACK (AK80)

The 3-speed Twister with halogen lighting hides the ventilation you need beneath your custom, built-in canopy. An optional liner extends and beautifies the hood and protects your cabinetry. Size: 27" CFM: 290



**TORNADO II POWER PACK (AK82)**

A power pack with a wireless remote control, adjustable depth liners in 36" and 42" widths and professional baffle filters to enhance performance.

Size: 29" CFM: 1,000



**TORNADO I POWER PACK (AK81)**

This 600-CFM power pack features dual-level halogen lighting, 3-speed blower, a decorative stainless steel filter and an angled housing unit for a better fit with any built-in canopy. An adjustable depth liner is also available.

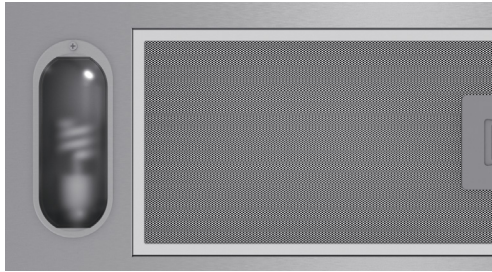
Size: 27" CFM: 600



**TORNADO MINI POWER PACK (AK84)**

Designed with cost-efficiency and versatility in mind, Tornado Mini's small footprint fits under a standard bridge cabinet. Or choose one of our optional adjustable-depth stainless steel liners to accommodate larger custom hood canopies.

Size: 20" CFM: 290



**TWISTER ES POWER PACK (AK80-ES)**

The 3-speed 290-CFM Twister ES hides the ventilation you need beneath your custom, built-in canopy. An optional stainless steel liner extends the hood and protects your cabinetry. ENERGY STAR approved with warm white fluorescent lighting.

Size: 27" CFM: 290



**WILLOW POWER PACK OUTDOOR (AK88)**

Willow's high performance professional stainless steel baffle filters enhance airflow, while being corrosion resistant and dishwasher-safe. 2-speed, rocker controls withstand extreme heat and moisture. Optional, adjustable-depth 304-grade liners are available in 36", 42", 48", 54" and 60" widths. Select either 304-grade stainless steel or galvanized steel with gray powder-coat protection.

Size: 29" CFM: 1,000



**MONSOON MINI (AK91)**

Good things come in small packages, and in this case it's the Monsoon Mini one-piece liner. Including dual-level halogen lights and 3-speed mechanical slide controls. Also equipped with a 300-CFM blower and vertical or horizontal ducting.

Size: 30", 36" CFM: 300



#### MONSOON DCBL ONE-PIECE LINER (AK94)

We started with a 715-CFM BLDC blower and added pro baffle filters with a removable grease tray for easy cleaning and finished it with our DCBL Suppression System® and ACT™ technology—making this the most advanced OPL available.

Size: 30", 36", 42" CFM: 715, 590, 390, 290



#### VORTEX ONE-PIECE LINER (AK90)

Say hello to the industry's only one-piece liner with adjustable-depth installation. Vortex extends up to 3-inches towards the front of the custom hood canopy so you can install it in spaces up to 20-1/2" deep.

Size: 30", 36" CFM: 390, 290



#### MONSOON II ONE-PIECE LINER (AK93)

When you need power, Monsoon II delivers. Pro baffle filters, 6-speed electronic controls, and wireless remote control give you more than you expected.

Size: 36", 42", 48", 54" CFM: 1,200

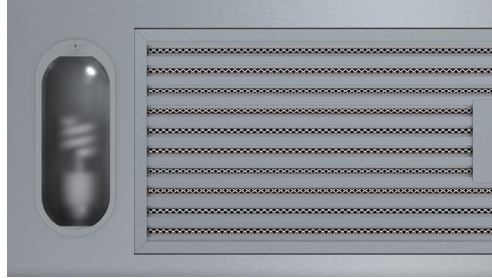


#### MONSOON I ONE-PIECE LINER (AK92)

A one-piece liner that includes dual-level halogen lights, an ADA compliant RF remote control, pro baffle filters, multiple CFM options and 6-speed electronic controls. ACT™ available on 30" and 36" models.

Size: 30", 36" CFM: 600, 390, 290

Size: 42", 48" CFM: 1,200



#### VORTEX ES ONE-PIECE LINER (AK90-ES)

The Vortex ES, certified ENERGY STAR one-piece liner leads the way with the industry's only adjustable-depth installation. Vortex ES is designed to extend up to 3-inches towards the front of the custom hood canopy so you can install it in spaces up to 20-1/2" deep. Includes energy-efficient warm white fluorescent lighting.

Size: 30", 36" CFM: 290







## **Showroom**

---

To learn more about making a statement in your home with a Zephyr hood, visit us at [zephyronline.com](http://zephyronline.com), where you can locate a dealer near you.

Or come visit our one-of-a-kind showroom in the heart of San Francisco's vibrant Design District. Our display area is the largest of its kind in North America and offers you over 6,000 square feet of new ventilation discoveries.

2277 Alameda Street  
at Potrero  
San Francisco, CA  
94103



# ZEPHYR

ZEPHYR VENTILATION

2277 Harbor Bay Parkway

Alameda, CA 94502

CONTACT US

1.888.880.VENT (8368)

[zephyronline.com](http://zephyronline.com)

SHOWROOM

2277 Alameda Street

San Francisco, CA 94103

415.552.8033

JAN16.0201